



**NEW
ACCESSORIES
FOR
2007**

Pump Accessories & Hose

- ▶ *PVC Reinforced Suction Hose with One Male & Female NPT Connection; 1" to 6" Sizes*
- ▶ *PVC Flexible Discharge Hose with One Male & Female NPT Connection; 1" to 6" Sizes*
- ▶ *Plated Steel Suction Strainers; 1" to 6" Sizes Standard and Trash Types*
- ▶ *Nipple Kits available in both NPT x NPT and NPT x BSPT*
- ▶ *Foot Valves available in 2" or 4 for 1 that fit sizes: 3/4", 1", 1 1/4", and 1 1/2"*



Foot Valves



Nipple Kit

Springer Pumps, LLC
Telford, PA 18969

Tel: 866-777-6060 /
Fax: 866-777-6383 /

Springer Pumps, LLC
Telford, PA 18969

Tel: 866-777-6060 / Int'l: 215-949-2900
Fax: 866-777-6383 / Int'l: 215-721-1296

INDUSTRIAL DUTY



PVC Reinforced Suction Hose



PVC Flexible Discharge Hose



**Standard Suction Strainer
w/ Small Openings**



**Trash Type Suction Strainer
w/ Large Openings**

www.springerpumps.com
info@springerpumps.com

www.springerpumps.com
info@springerpumps.com

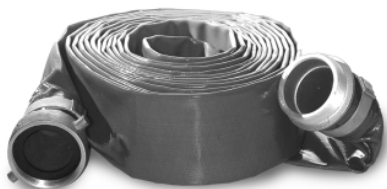
AMT Pump Accessories & Hose

Water suction and discharge hose designed for construction, mining, marine, and irrigation purposes. Temperature range 10° to 150° F. Construction: green, flexible, abrasion resistant PVC with a rigid PVC reinforcement for full vacuum. Smooth Bore.

AMT Part No.	PVC Reinforced Water Suction Hose	Ship Wt. (Lbs.)
C222-90	1" x 15' PVC Water Suction Hose Assembly	8
C220-90	1-1/2" x 20' PVC Water Suction Hose Assembly	10
C221-90	2" x 20' PVC Water Suction Hose Assembly	17
C356-90	3" x 20' PVC Water Suction Hose Assembly	28
C357-90	4" x 20' PVC Water Suction Hose Assembly	38
C354-90	6" x 20' PVC Water Suction Hose Assembly	75



Designed for moderate water discharge services. Strong, lightweight alternative to our contractors grade discharge hose. Construction: close woven nylon jacket impregnated with polyvinyl chloride. Mildew resistant. Rolls up flat for easy storage.



PVC Water Discharge Hose Assembly Size	AMT Part No. 25' Length	Ship Wt. (Lbs)	AMT Part No. 50' Length	Ship Wt. (Lbs)
1-1/2"	C216-90	6	C372-90	11
2"	C217-90	8	C373-90	19
3"	C358-90	11	C374-90	22
4"	C359-90	17	C375-90	32
6"	C353-90	25	C376-90	54

AMT Part No.	Hose Kits, Hose and Fittings	Ship Wt. (Lbs.)
55-362	2" General Purpose Hose Kit with 20 ft. 2" suction and 25 ft. 2" discharge hose, hose wrench	20
55-363	3" General Purpose Hose Kit with 20 ft. 3" suction and 25 ft. 3" lay flat discharge hose, hose wrench	20
55-338	2" High Pressure Hose Kit with 20 ft. 2" suction and 100 ft. 1-1/2" high pressure (100 PSI) discharge hose, (1) 1-1/2" fire nozzle, 1-1/2" x 2" adaptor, hose wrench	38



AMT Part No.	Nipple Kits: Include 2 Nipples and Thread Sealant in Single Carton	Ship Wt. (Lbs)
C365-90	1-1/2" NPT x NPT Pipe Nipple Kit	2
C366-90	2" NPT x NPT Pipe Nipple Kit	2
C367-90	3" NPT x NPT Pipe Nipple Kit	4
C368-90	4" NPT x NPT Pipe Nipple Kit	6
C369-90	2" NPT x BSPT Pipe Nipple Kit	2
C370-90	3" NPT x BSPT Pipe Nipple Kit	4
C371-90	4" NPT x BSPT Pipe Nipple Kit	6

AMT Part No.	Foot Valve	Ship Wt. (Lbs.)
C378-90	4 for 1: fits pipe sizes 3/4", 1", 1-1/4", and 1-1/2"	2
C379-90	2"	2

AMT Part No.	Suction Strainers, Plated Steel	Ship Wt (Lbs)
C360-90	1" Suction Strainer with 1-1/4" Openings	2
C229-90	1-1/2" Suction Strainer with 3/8" Openings	2
C230-90	2" Suction Strainer with 3/8" Openings	3
C362-90	2" Suction Strainer with 1" Openings	2
C519-90	3" Suction Strainer with 3/8" Openings	4
C520-90	3" Suction Strainer with 1-1/2" Openings	4
C364-90	4" Suction Strainer with 1-1/2" Openings	4
C377-90	6" Suction Strainer with 2-1/2" Openings	6
C210-90	2" BSPT Suction Strainer with 3/8" Openings	3
C211-90	2" BSPT Suction Strainer with 1" Openings	3
C310-90	3" BSPT Suction Strainer with 3/8" Openings	4
C311-90	3" BSPT Suction Strainer with 1-1/2" Openings	4



See price book page 15

The Gorman-Rupp Company reserves the right to discontinue any model or change specifications at any time without incurring any obligation.

Tel: 866-777-6060 / Int'l: 215-949-2900

Fax: 866-777-6383 / Int'l: 215-721-1296

CP39-40/1206

www.springerpumps.com

info@springerpumps.com